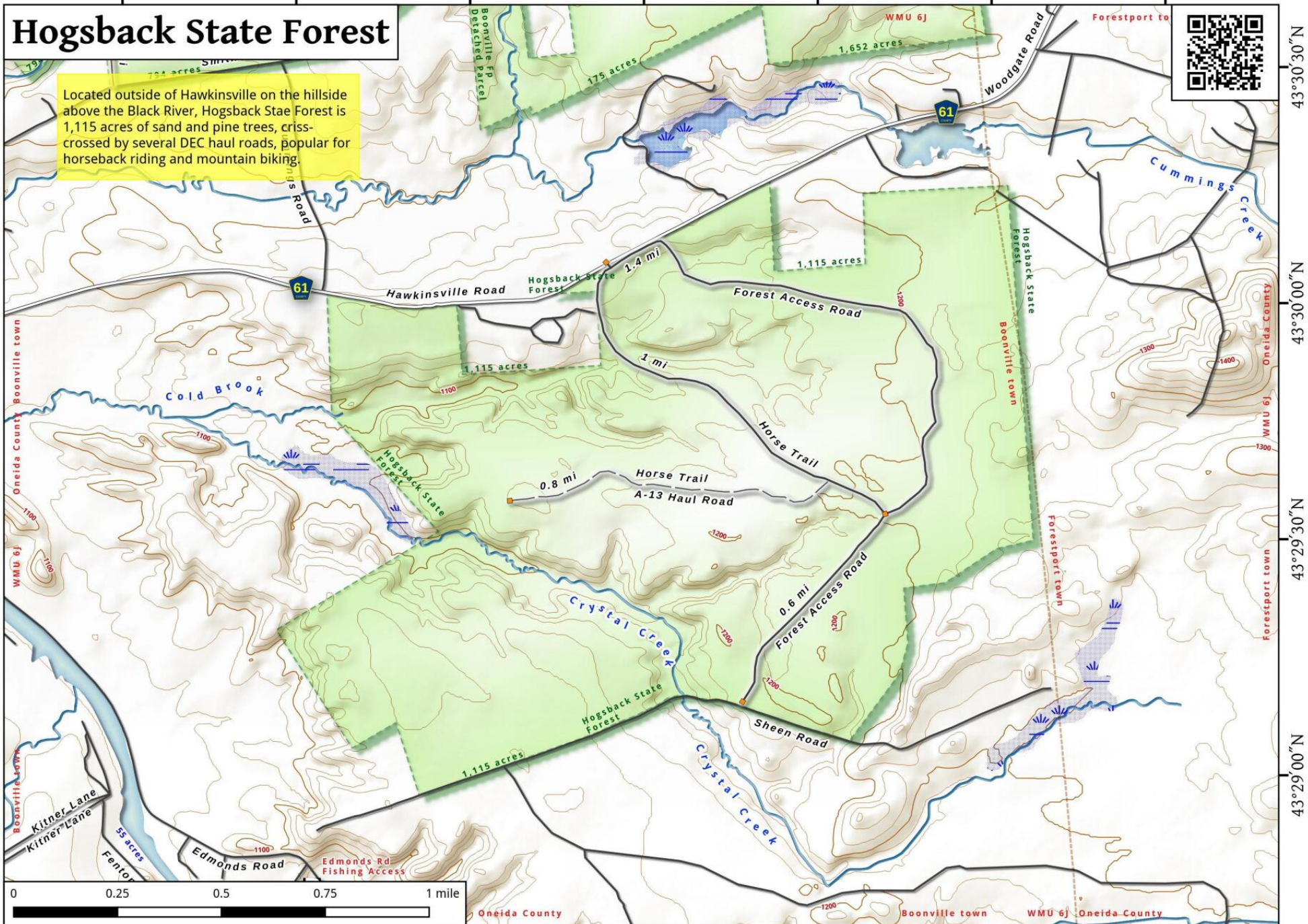


Hogsback State Forest

Located outside of Hawkinsville on the hillside above the Black River, Hogsback State Forest is 1,115 acres of sand and pine trees, criss-crossed by several DEC haul roads, popular for horseback riding and mountain biking.



Hogsback State Forest Map, August 14, 2016 by AndyArthur.org in QGIS 2.16.1-Nødebo and Python. Street Map is Copyright © OpenStreetMap contributors, CC BY-SA. NYSDEC Data: DEM, Borders, ADK Wetlands, Trails, Assets. True North. 1 inch = 0.3 miles. Projection: NAD83 / UTM zone 18N. Coordinates: 30" WGS 84. Contours are 20 feet.