

75°55'30"W

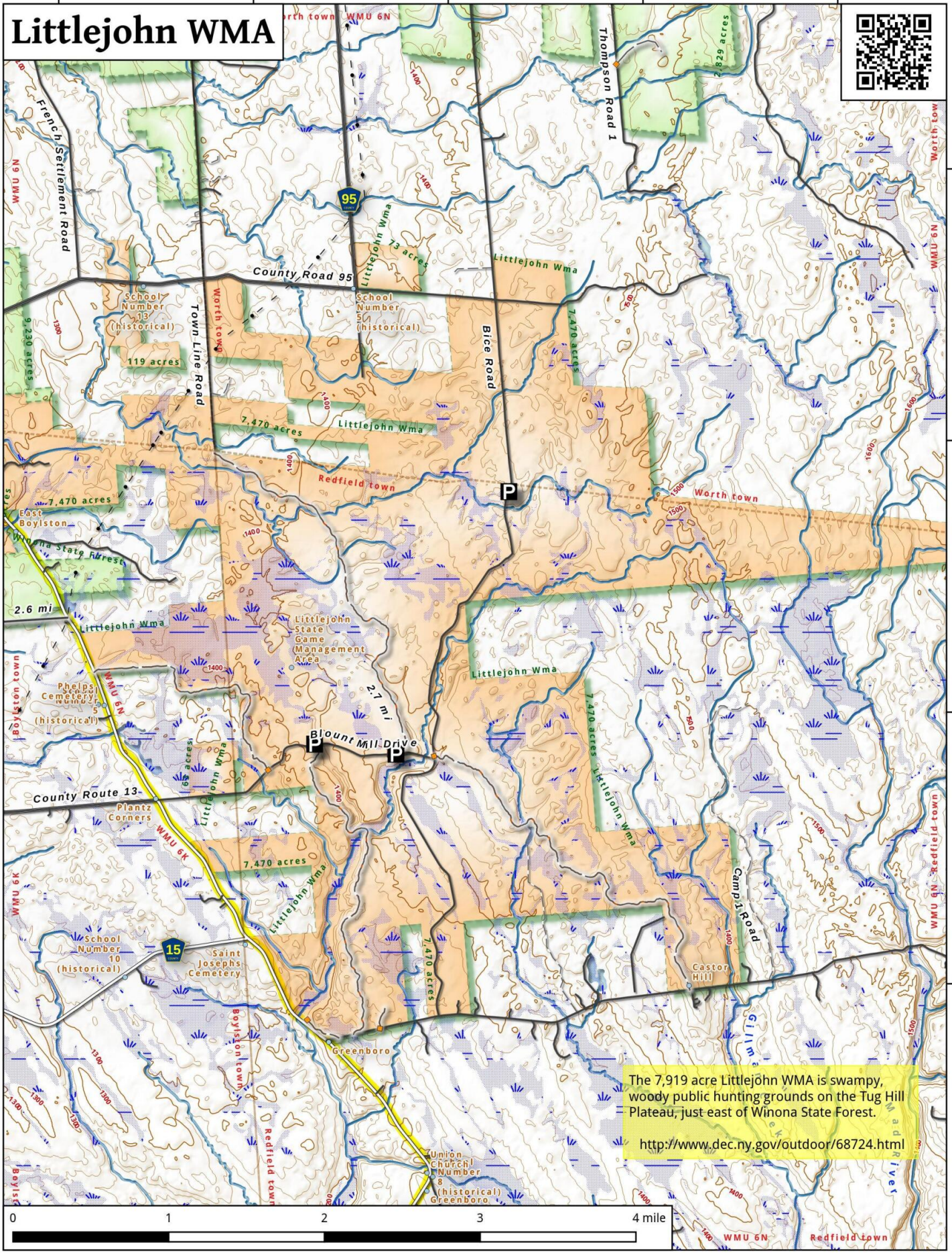
75°54'0"W

75°52'30"W

75°51'0"W

75°49'30"W

# Littlejohn WMA



43°43'30"N

43°42'0"N

43°40'30"N

43°39'0"N

The 7,919 acre Littlejohn WMA is swampy, woody public hunting grounds on the Tug Hill Plateau, just east of Winona State Forest.

<http://www.dec.ny.gov/outdoor/68724.html>



Littlejohn WMA Map, April 11, 2016 by AndyArthur.org in QGIS 2.14.1-Essen and Python. Street Map is Copyright © OpenStreetMap contributors, CC BY-SA. NYSDEC Data: DEM, Borders, ADK Wetlands, Trails, Assets. True North. 1 inch = 0.8 miles. Projection: NAD83 / UTM zone 18N. Coordinates: 1" 30' WGS 84 Grid. Contours are 20 feet.