

-74.50

-74.49

-74.48

-74.47

-74.46

-74.45

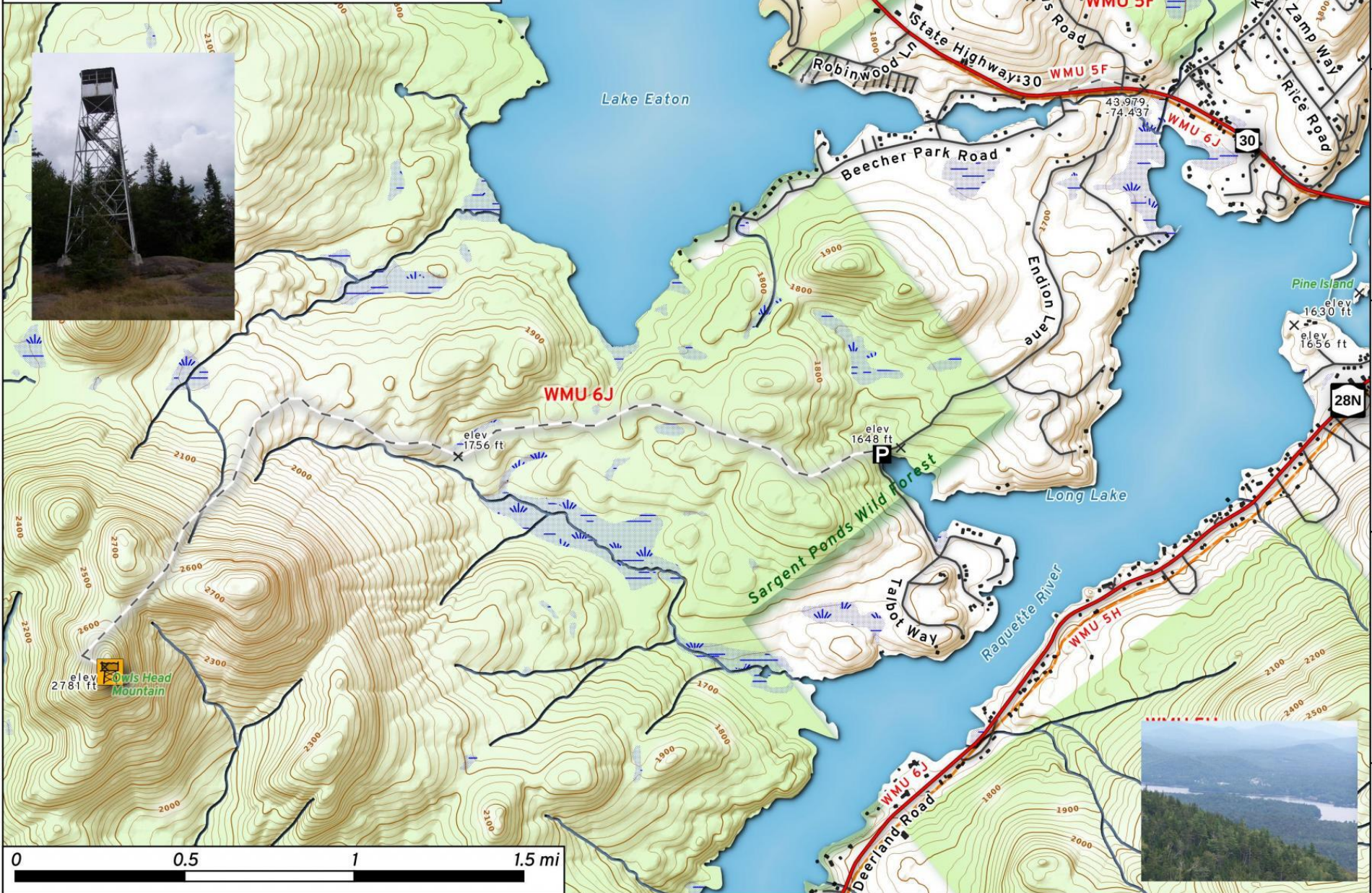
-74.44

-74.43

Owls Head Firetower

3.2 mile hike to a tower overlooking Long Lake.

<https://andyarthur.org/owls-head-mountain-firetower-long-lake>



Owls Head Firetower Map, February 8, 2022 by AndyArthur.org in QGIS 3.22.2-Białowieża and Python. Street Map is Copyright © OpenStreetMap contributors, CC BY-SA. NYSDEC Data: LiDAR/DEM, Borders, ADK Wetlands, Trails, Assets. True North. 1 inch = 0.4 miles. Projection: NAD83 / UTM zone 18N. Coordinates: 0.01° latitude-longitude (WGS84). Contours are 20 feet. Map is centered on 43.9619, -74.4712.